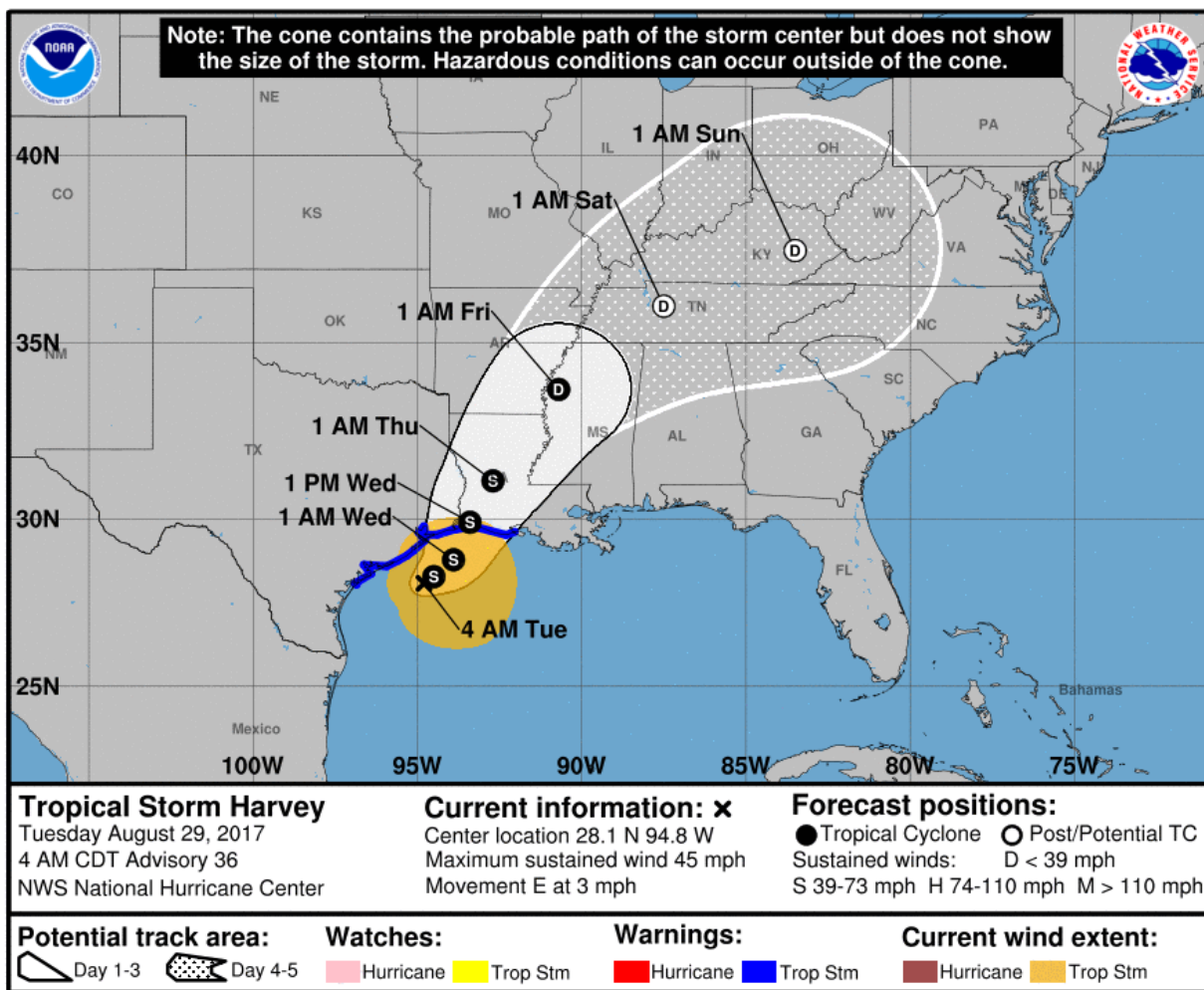


ICS Form 201

INCIDENT BRIEFING 7	1. Incident Name Tropical Storm Harvey	2. Date Prepared 29-Aug-2017	3. Time Prepared 05:57a
--------------------------------------	--	--	-----------------------------------

4. Map Sketch



ARRL STX

With local amateur radio infrastructure participation and cooperation from
 American Red Cross
 Harris County Homeland Security Office of Emergency Management
 Calls of support from Alabama SEC, North Texas SEC and Oklahoma SEC
 Northern New Jersey North Texas, New Mexico, and Georgia Sections,
American Red Cross

ICS 201 Page 1 of 6	5. Prepared by (Name and Position) Jeff Walter, KE5FGA ARRL STX SEC 281-467-8595
------------------------	--

6. Summary of Current Actions and NWS Update

From: <http://harrisrecovery.org/strategic-and-disaster-methods/>

In preparation for the likelihood of widespread flooding it is important to

1. **Take Pictures, before and after:** take pictures of all rooms in your home, particularly first floor rooms. If any damage occurs, take pictures again, to illustrate the damage.
2. **Harris County and City of Houston have issued a shelter in place order. The local region is paralyzed. Resources are stretched to accommodate all calls for assistance.**

Take care of your family first, then if you are able to help in the recovery phase contact your local EC or DEC for instruction on what to do. Do not show up without approval from your local EC.

000

WTNT34 KNHC 290859

TCPAT4

BULLETIN

Tropical Storm Harvey Advisory Number 36

NWS National Hurricane Center Miami FL AL092017

400 AM CDT Tue Aug 29 2017

...CONTINUED HEAVY RAINFALL TODAY IS EXPECTED TO WORSEN THE FLOOD SITUATION IN SOUTHEASTERN TEXAS AND SOUTHWESTERN LOUISIANA...
...DO NOT ATTEMPT TO TRAVEL IN THE AFFECTED AREAS IF YOU ARE IN A SAFE PLACE AND DO NOT DRIVE INTO FLOODED ROADWAYS...

SUMMARY OF 400 AM CDT...0900 UTC...INFORMATION

LOCATION...28.1N 94.8W

ABOUT 100 MI...160 KM ESE OF PORT OCONNOR TEXAS

ABOUT 135 MI...220 KM SSW OF PORT ARTHUR TEXAS

MAXIMUM SUSTAINED WINDS...45 MPH...75 KM/H

PRESENT MOVEMENT...E OR 90 DEGREES AT 3 MPH...6 KM/H

MINIMUM CENTRAL PRESSURE...997 MB...29.44 INCHES

WATCHES AND WARNINGS

CHANGES WITH THIS ADVISORY:

None.

SUMMARY OF WATCHES AND WARNINGS IN EFFECT:

A Tropical Storm Warning is in effect for...

* Mesquite Bay to Intracoastal City

A Storm Surge Watch is in effect for...

* Port Bolivar to Morgan City

Catastrophic and life-threatening flooding continues in southeastern Texas and portions of southwestern Louisiana. Please see warnings and other products issued by your local National Weather Service office for additional information on this life-threatening situation.

A Storm Surge Watch means there is a possibility of life-threatening inundation, from rising water moving inland from the coastline, in the indicated locations during the next 48 hours. For a depiction of areas at risk, please see the National Weather Service Storm Surge Watch/Warning Graphic, available at hurricanes.gov.

Interests elsewhere along the middle and upper Texas coast and in southern Louisiana should continue to monitor the progress of Harvey.

For storm information specific to your area, including possible inland watches and warnings, please monitor products issued by your local National Weather Service forecast office.

DISCUSSION AND 48-HOUR OUTLOOK

At 400 AM CDT (0900 UTC), the center of Tropical Storm Harvey was located near latitude 28.1 North, longitude 94.8 West. Harvey is moving toward the east near 3 mph (6 km/h), and this motion is expected to continue through this morning. A turn toward the northeast and a continued slow forward speed are expected later today and tonight, followed by a turn toward the north-northeast on Wednesday. On the forecast track, the center of Harvey is expected to be just offshore of the middle and upper coasts of Texas through tonight, then move inland over the northwestern Gulf coast on Wednesday.

Maximum sustained winds are near 45 mph (75 km/h) with higher gusts. Little change in strength is forecast during the next 48 hours.

Tropical-storm-force winds extend outward up to 175 miles (280 km) from the center. An NOS observing site at Texas Point, Sabine Pass, recently reported a sustained wind of 46 mph (74 km/h) with a gust to 56 mph (91 km/h).

The estimated minimum central pressure is 997 mb (29.44 inches).

HAZARDS AFFECTING LAND

RAINFALL: Harvey is expected to produce additional rainfall accumulations of 7 to 13 inches through Friday over parts of the upper Texas coast into southwestern Louisiana. Isolated storm totals may reach 50 inches over the upper Texas coast, including the Houston/Galveston metropolitan area. These rains are currently producing catastrophic and life-threatening flooding over large portions of southeastern Texas and southwestern Louisiana. DO NOT

ATTEMPT TO TRAVEL IN THE AFFECTED AREA IF YOU ARE IN A SAFE PLACE. DO NOT DRIVE INTO FLOODED ROADWAYS. Please see warnings and products issued by your local National Weather Service office for additional information on this life-threatening situation.

Elsewhere, Harvey is expected to produce total rain accumulations of 5 to 15 inches farther east across south-central Louisiana. Rainfall amounts of 5 to 10 inches are expected in southeast Louisiana and coastal Mississippi and Alabama.

A list of rainfall observations compiled by the NOAA Weather Prediction Center can be found at:
www.wpc.ncep.noaa.gov/discussions/nfdsccl.html

STORM SURGE: The combination of a dangerous storm surge and the tide will cause normally dry areas near the coast to be flooded by rising waters moving inland from the shoreline. The water is expected to reach the following heights above ground if the peak surge occurs at the time of high tide...

Mesquite Bay to Morgan City including Galveston Bay...1 to 3 ft

The deepest water will occur along the immediate coast near the area of onshore winds. Surge-related flooding depends on the relative timing of the surge and the tidal cycle, and can vary greatly over short distances. For information specific to your area, please see products issued by your local National Weather Service forecast office.

WIND: Tropical storm conditions are occurring over portions of the warning area along the coast. Tropical storm conditions are likely to persist within the warning area during the next couple of days.

SURF: Swells generated by Harvey are affecting the coasts of Texas and Louisiana. These swells are likely to cause life-threatening surf and rip current conditions. Please consult products from your local weather office.

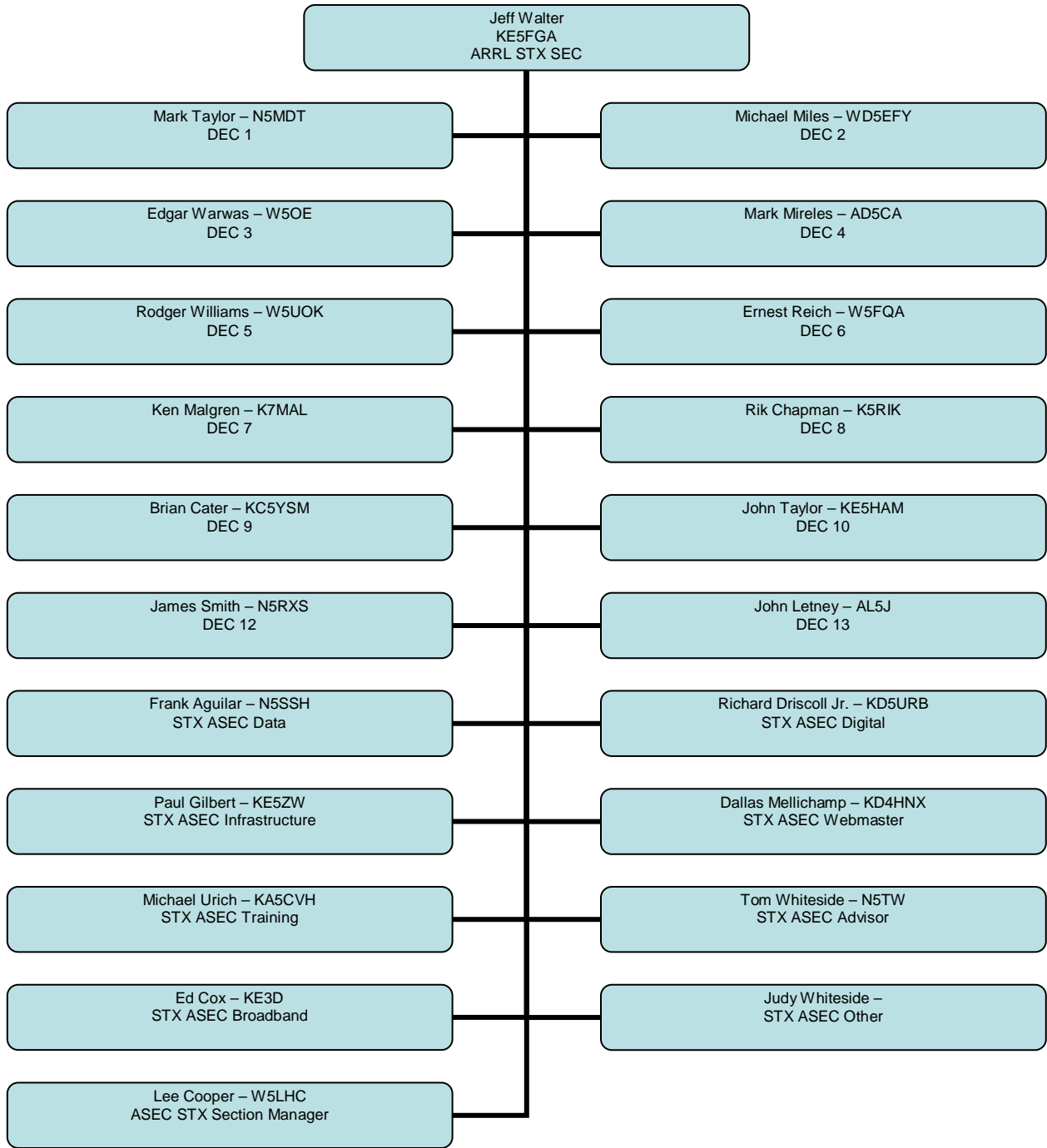
TORNADOES: A few tornadoes are possible through tonight from extreme southeast Texas across southern Louisiana, southern Mississippi and extreme southwestern Alabama.

NEXT ADVISORY

Next intermediate advisory at 700 AM CDT.
Next complete advisory at 1000 AM CDT.

\$\$
Forecaster Pasch

7. Current Organization



8. Resources Summary for Tuesday

Resources Ordered	Resource Identification	ETA	On Scene	Location/Assignment
12 amateur operators	Net control Liaison			Harris County OEM
36 amateur radio operators throughout the region	The typical radio equipment needed is a dual band mobile radio with a gain antenna (over 19" in length), a power supply and a power strip. I suggest that 2 members deploy per staffing period.			Red Cross Shelters
ICS 201	Page 6			