

Greater Chicago HF Trading Stations

David L. Wilson
dwilson314@verizon.net
August 2023

Note: Some of these stations have asked the FCC to keep their modulation “Confidential”. Some of the stations are within sight of each other, making the source of signals somewhat difficult to determine. **Also, company names and transmission modes and frequencies change. Included spectrum and waterfall captures are only representative and not complete. Some stations were not observed to be transmitting while visiting the area.**

(All rights reserved.)

IMC/Toggle Communications LLC (WI2XAJ)

SW corner of Rowe and Bateman Roads, Elburn (Blackberry Twp.), IL (41° 51' 30" N, 88° 29' 10" W)

Frequencies: 6.795-7.000, 9.040-9.400, 10.150-11.175, 12.100-12.230, 14.359-14.990 MHz

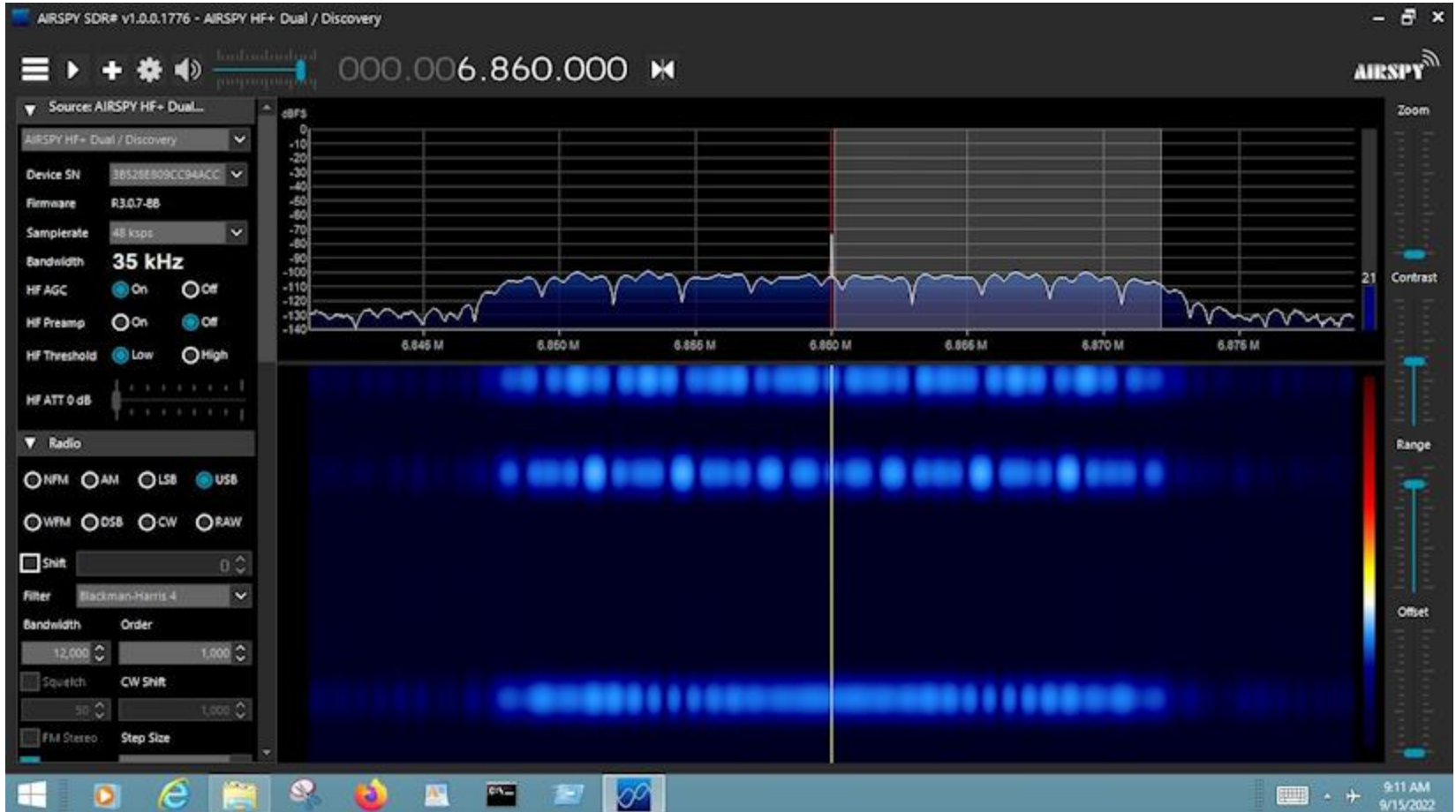
Emission: 3K00G1D, 3K00Q1D, 6K00G1D, 6K00Q1D, 10K0G1D, 10K0Q1D, 12K0G1D, 12K0Q1D, 18K0G1D, 18K0Q1D, 24K0G1D, 24K0Q1D (linked to Seattle, WA) Modulation: (Confidential)



Tower space is leased from MidAmerica Towers.

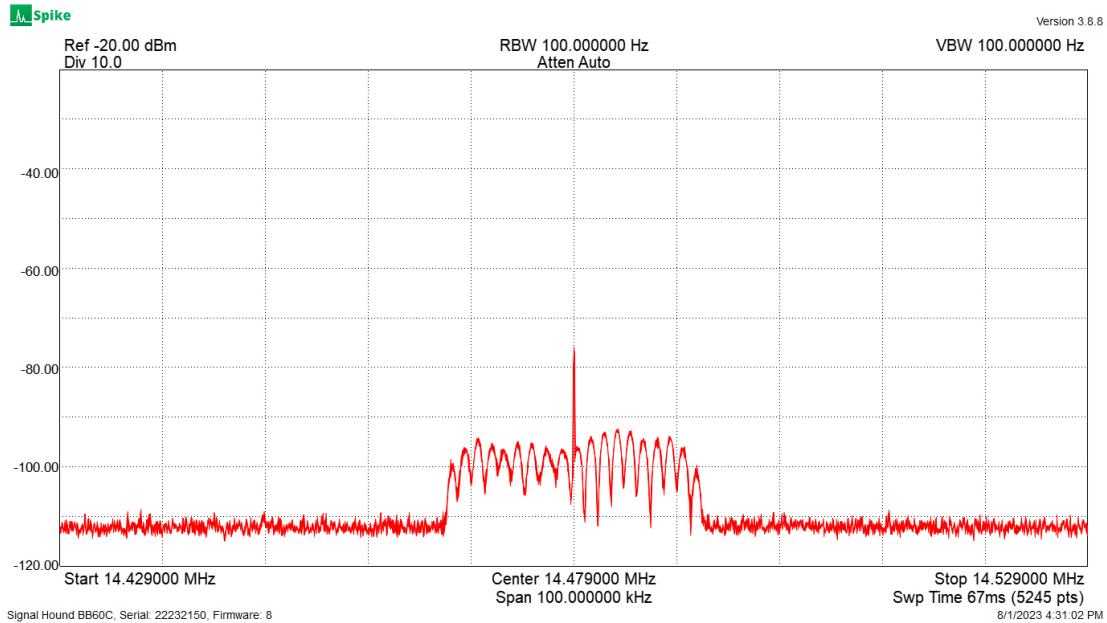


IMC/Toggle Communications LLC (WI2XAJ) - SW Rowe and Bateman Roads, Elburn, IL

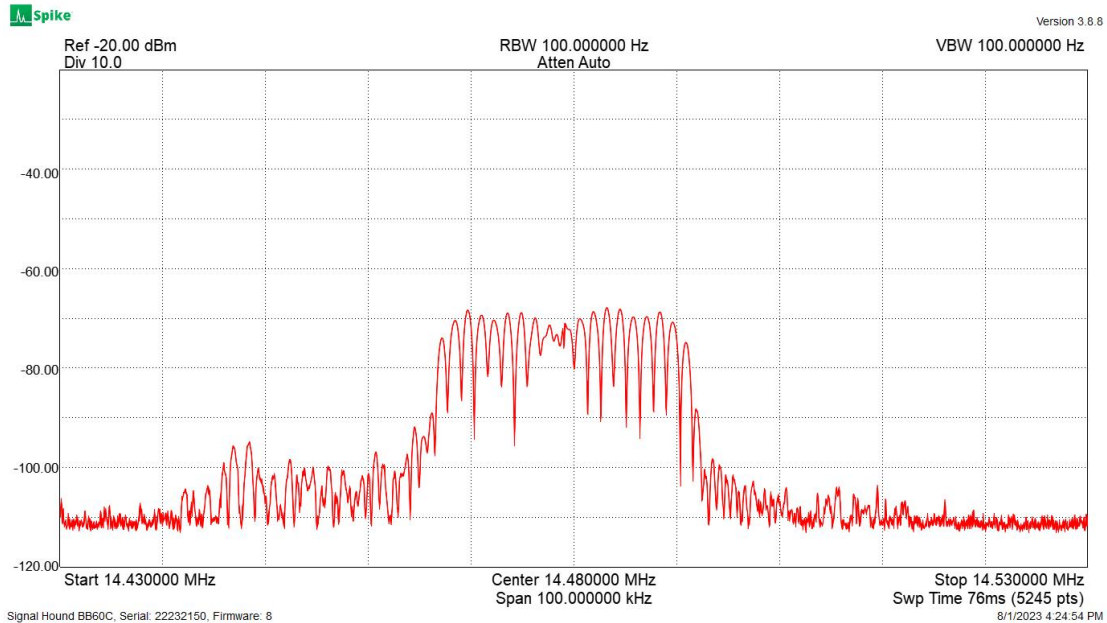


Airspy HF+ Discovery
SDRsharp software

IMC/Toggle Communications LLC (WI2XAJ) - SW Rowe and Bateman Roads, Elburn ,IL



Peak Hold
Signal Hound BB60C
Spike software



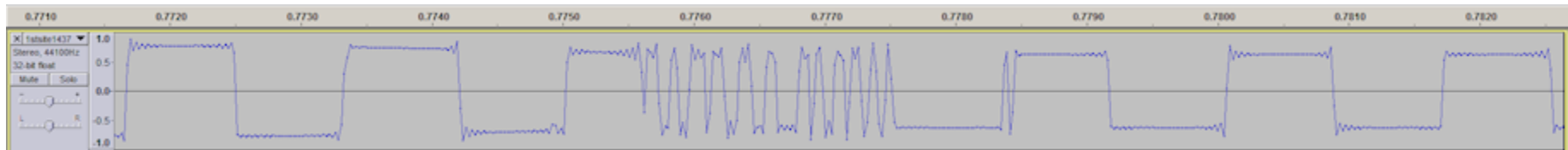
Peak Hold
Signal Hound BB60C
Spike software

IMC/Toggle Communications LLC (WI2XAJ) - SW Rowe and Bateman Roads, Elburn, IL

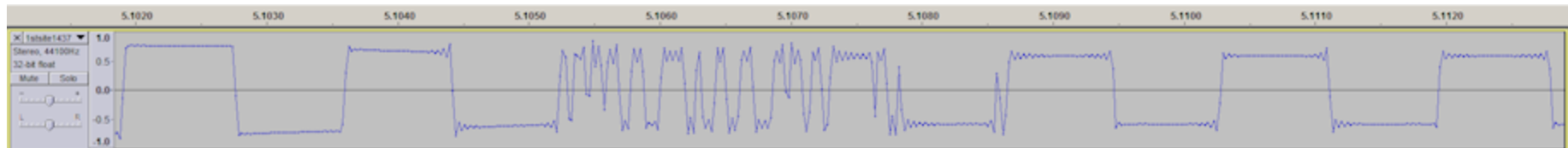
Audio of two data burst interrupting the carrier

(Tuned in usb with the carrier producing a tone at 599 Hz)

First data burst (interrupting the carrier transmission)



Second data burst (interrupting the carrier transmission)



(Note: The data burst bandwidth is too large for the usb captures above.)

IMC/Toggle Communications LLC (WI2XAJ)

1N741 Pilsen Rd, West Chicago, IL (41° 53' 54" N, 88° 13' 14" W)

Frequencies: 5.06-5.45, 6.795-7, 9.04-9.4, 10.15-11.175, 12.1-12.23, 14.35-14.99

Emission: 3K00G1D, 3K00Q1D, 6K00G1D, 6K00Q1D, 10K0G1D, 10K0Q1D, 18K0G1D, 18K0Q1D, 24K0G1D, 24K0Q1D, 12K0G1D, 12K0Q1D Modulation: (Confidential)



DPA Mac LLC (Ex 3DB Communications Inc.) (WI2XXG)
44W527 Welter Road, Maple Park, IL (41° 56' 3" N, 88° 29' 1" W)

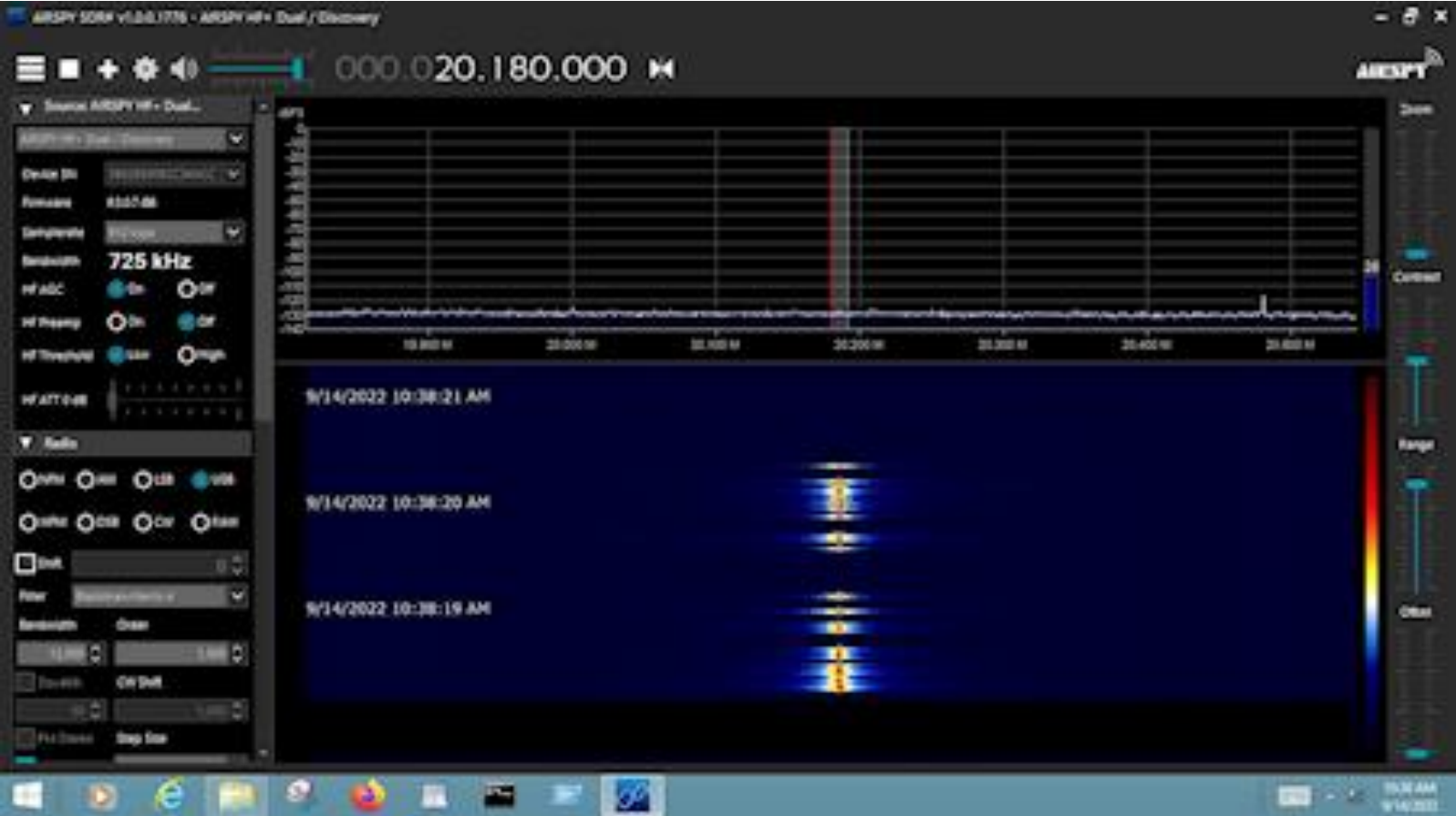
Frequencies: 4438-4650, 5060-5450, 5730-5800, 6765-7000, 7450-8100, 8147.5, 9040-9400, 10150-11175, 11400-11600, 12100-12230, 13410-13570, 13870-14000, 14350-14990, 15800-16360, 17445, 18168-18780, 19020-19680, 19800-19990, 20010-21000, 21897, 22855-23000, 23000-23200, 23350-24890 kHz

Emission: 48K0G1D, 54K0G1D, 70K0G1D, 95K0G1D, 96K0G1D

Modulation: FSK,PSK,QAM4,8,16,32,64



DPA Mac LLC (WI2XXG) - 44W527 Welter Road, Maple Park, IL



Airspy HF+ Discovery
SDRsharp software

DPA Mac LLC (Ex 3DB Communications Inc.) (WI2XXG)

47W543 Perry Road, Maple Park (Kaneville Twp.), IL (41° 50' 36" N, 88° 32' 17" W)

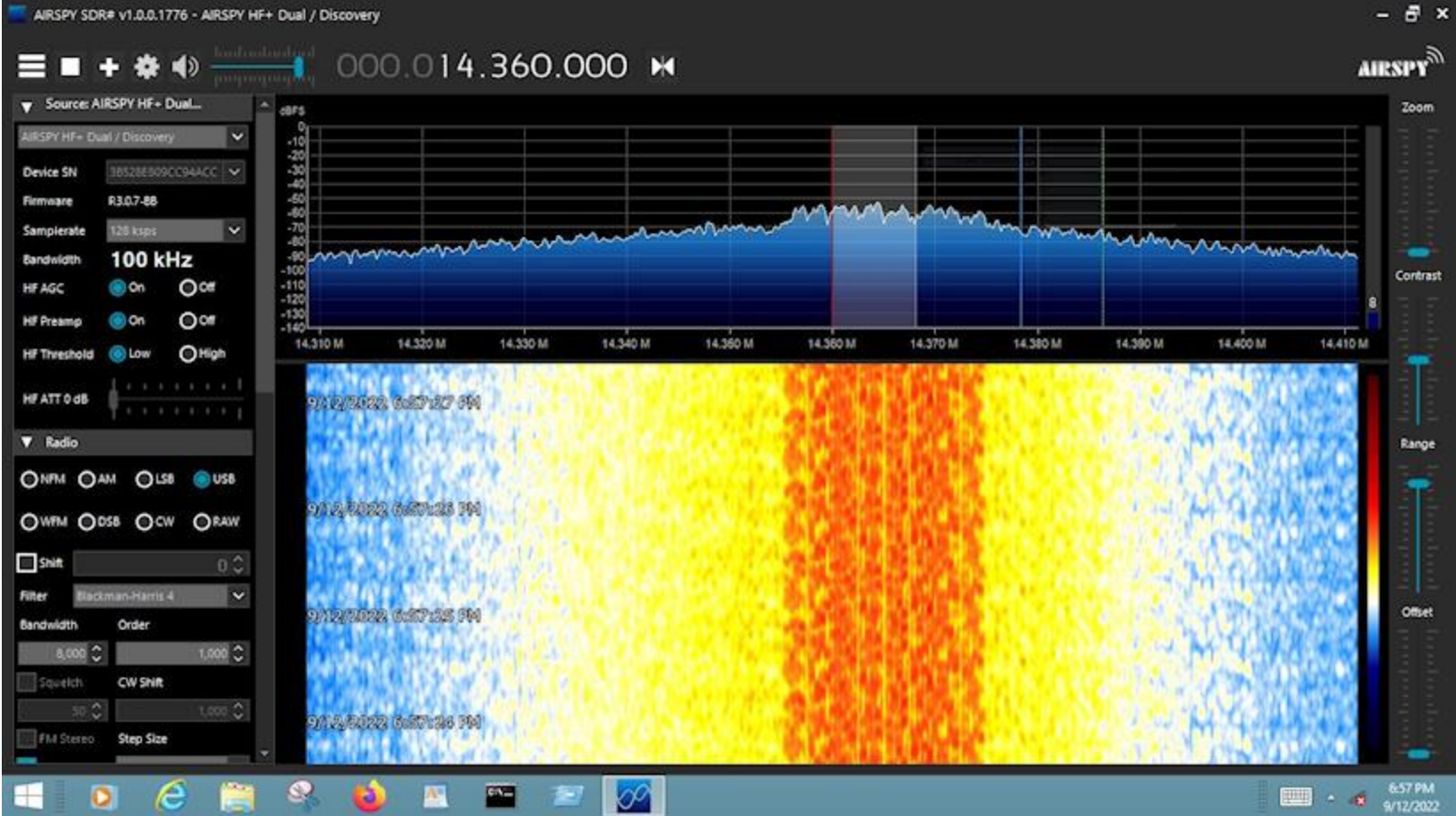
Frequencies: 4438-4650, 5060-5450, 5730-5800, 6765-7000, 7450-8100, 8147.5, 9040-9400, 10150-11175, 11400-11600, 12100-12230, 13410-13570, 13870-14000, 14350-14990, 15800-16360, 17445, 18168-18780, 19020-19680, 19800-19990, 20010-21000, 21897, 22855-23000, 23000-23200, 23350-24890 kHz

Emission: 48K0G1D, 54K0G1D, 70K0G1D, 95K0G1D, 96K0G1D

Modulation: FSK,PSK,QAM4,8,16,32,64

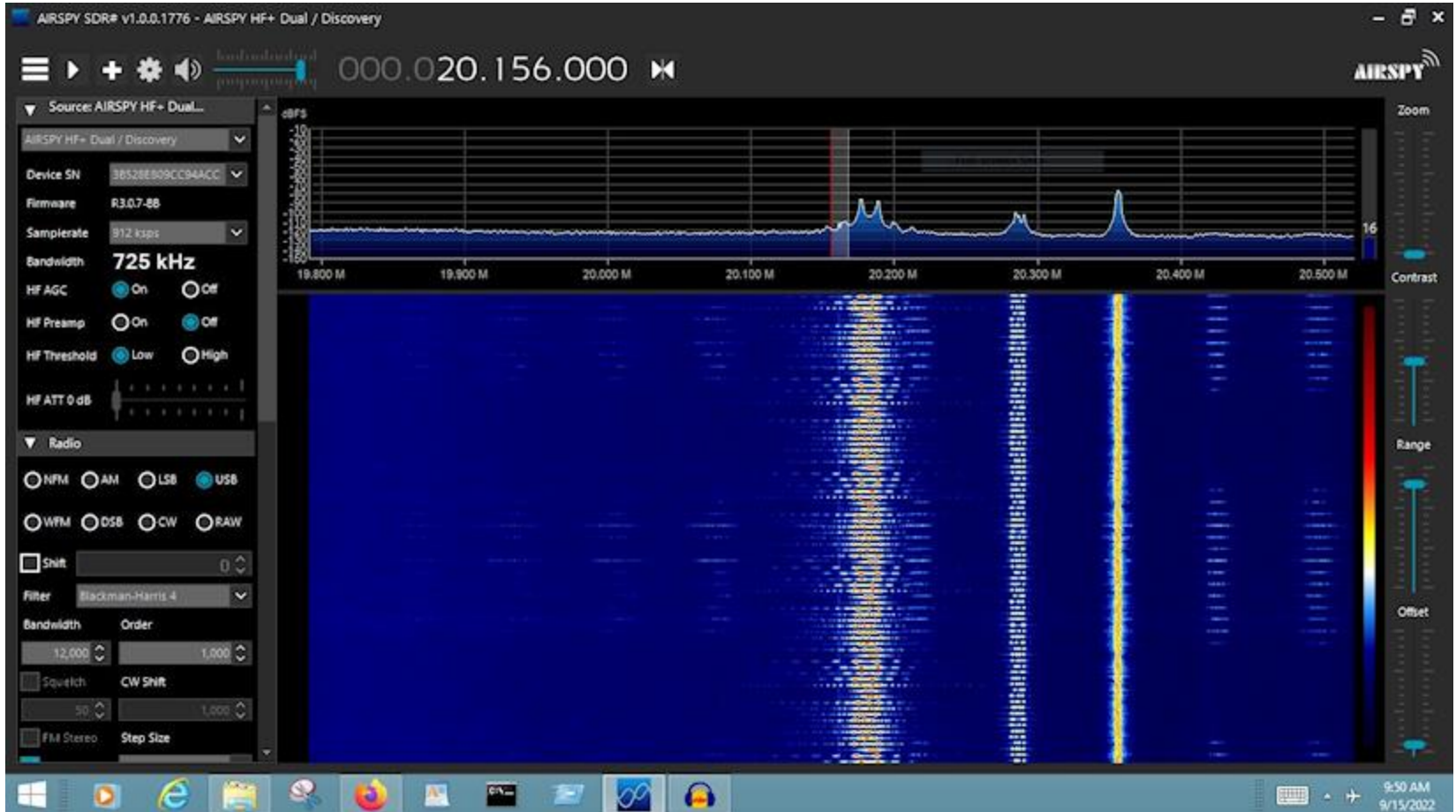


DPA Mac LLC (WI2XXG) - 47W543 Perry Road, Maple Park, IL



Airspy HF+ Discovery SDRsharp software

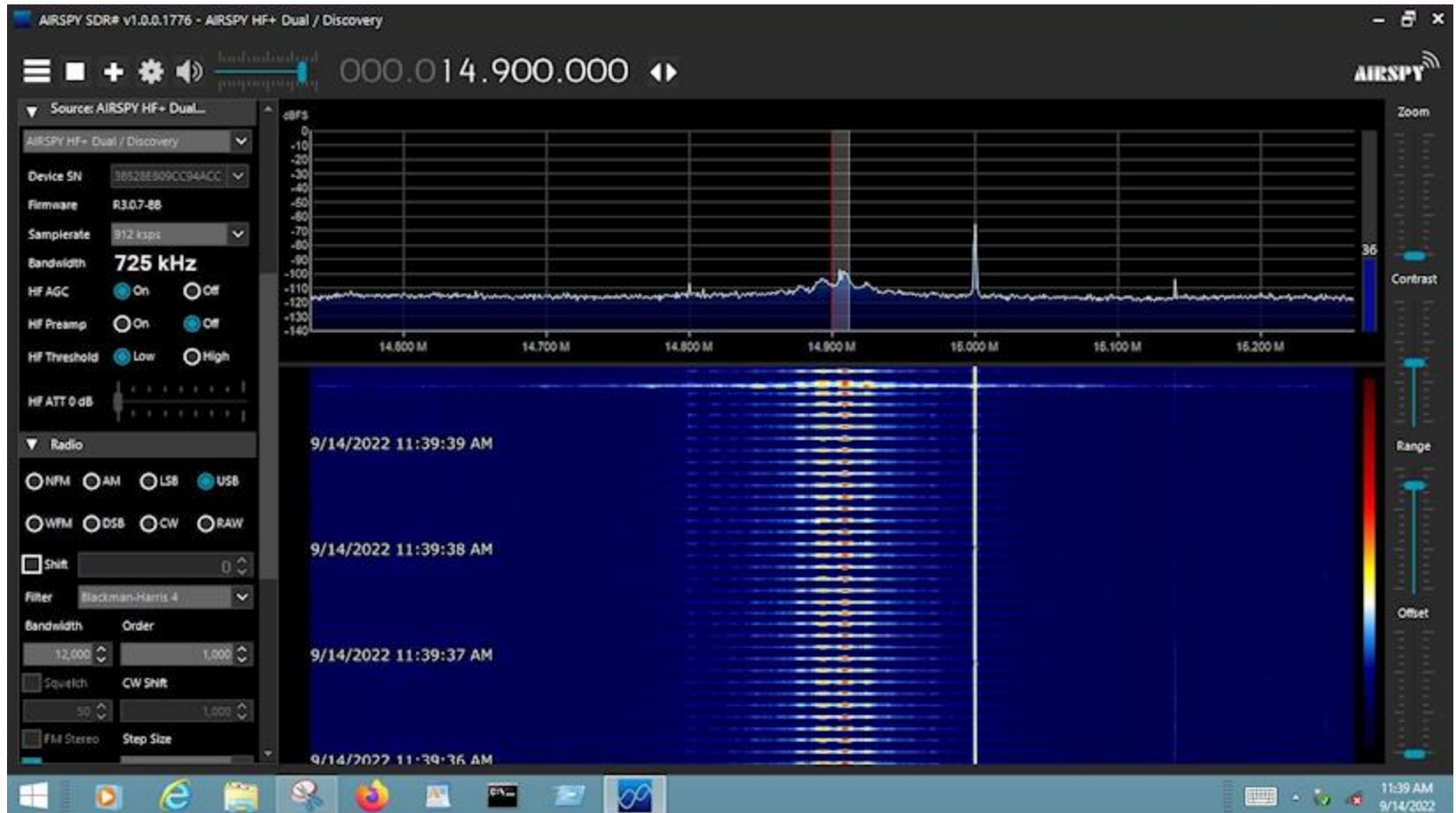
DPA Mac LLC (WI2XXG) - 47W543 Perry Road, Maple Park, IL



[Audio example A](#)
[Audio example B](#)

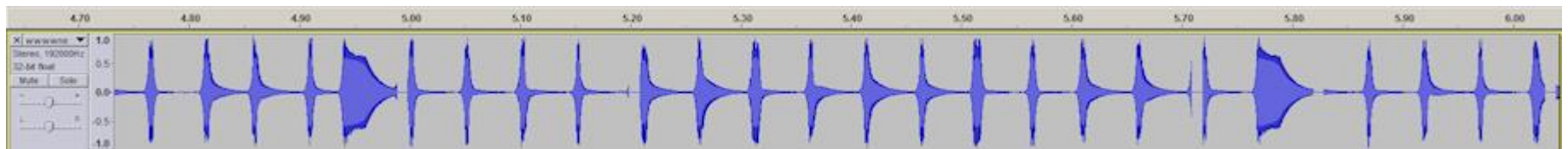
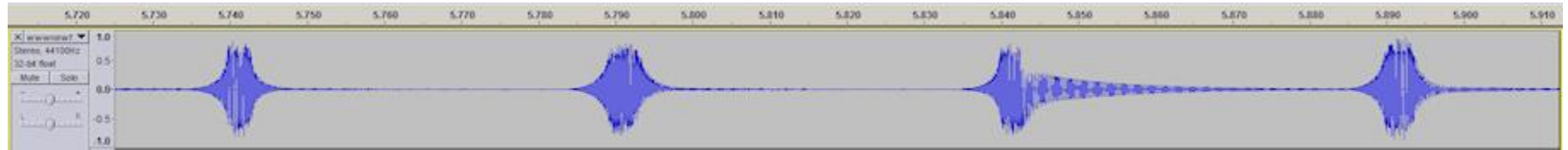
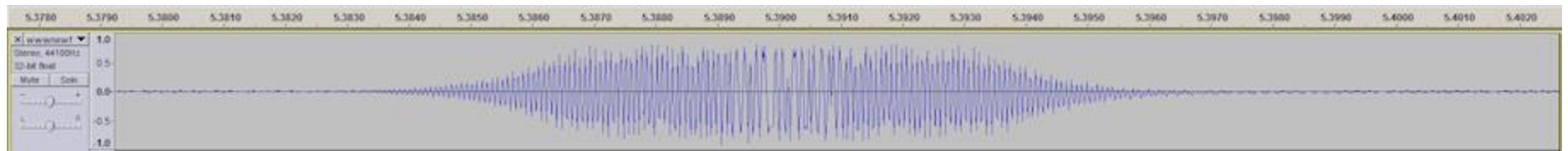
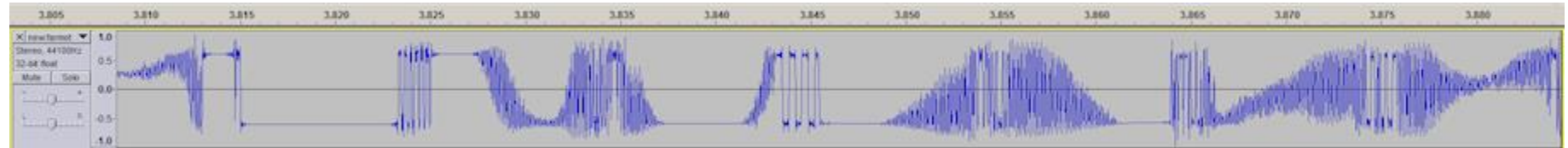
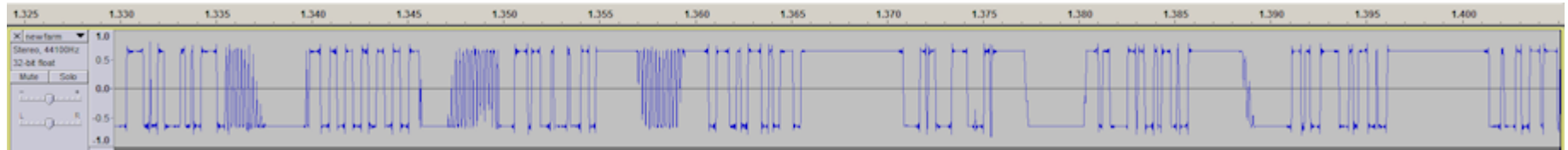
Airspy HF+ Discovery
SDRsharp software

DPA Mac LLC (WI2XXG) - 47W543 Perry Road, Maple Park, IL



Airspy HF+ Discovery
SDRsharp software

DPA Mac LLC (WI2XXG) - 47W543 Perry Road, Maple Park, IL



Jump/10Band LLC (W12XNX)

45W050 Beith Rd, Elburn (Virgil Twp.), IL (41° 55' 36" N, 88° 29' 48" W)

Frequencies: 6.7650-7.000, 7.450-8.100, 10.150-11.175, 12.100-12.230, 14.350-14.990, 16.200-16.360, 18.168-18.750, 19.020-19.680, 20.010-21.000 MHz

Emission: 24K0D1D, 24K0F1D, 48K0D1D, 48K0F1D Modulation: FSK, 4-QAM



Jump/10Band LLC (WI2XNX)
45W050 Beith Rd, Elburn (Virgil Twp.), IL
(Different view)

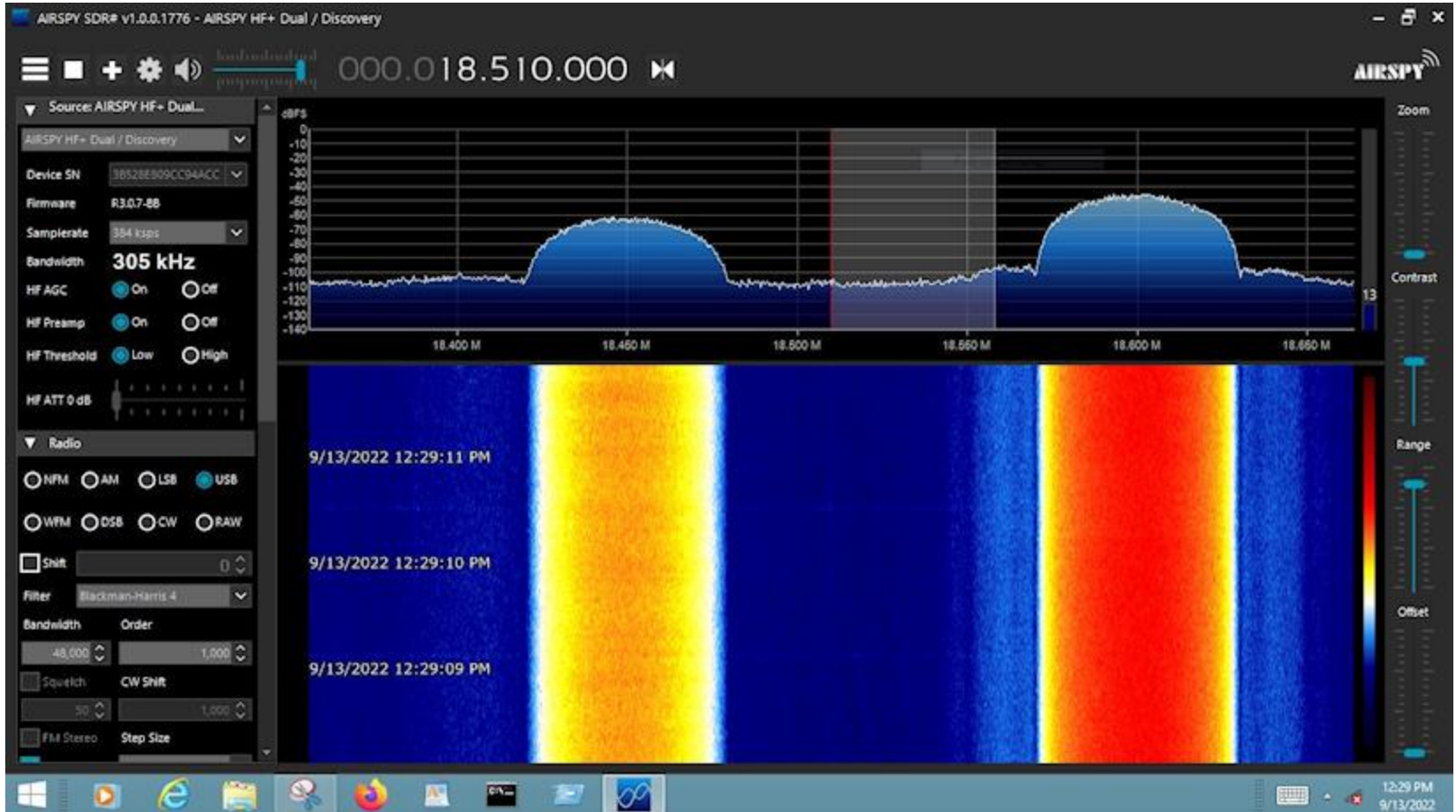


Jump/10Band LLC (WI2XNX) - 45W050 Beith Rd, Elburn (Virgil Twp.), IL

Image processing of part of the previous image to “bring out” the wire antennas.



Jump/10Band LLC (WI2XNX) - 45W050 Beith Rd, Elburn (Virgil Twp.), IL

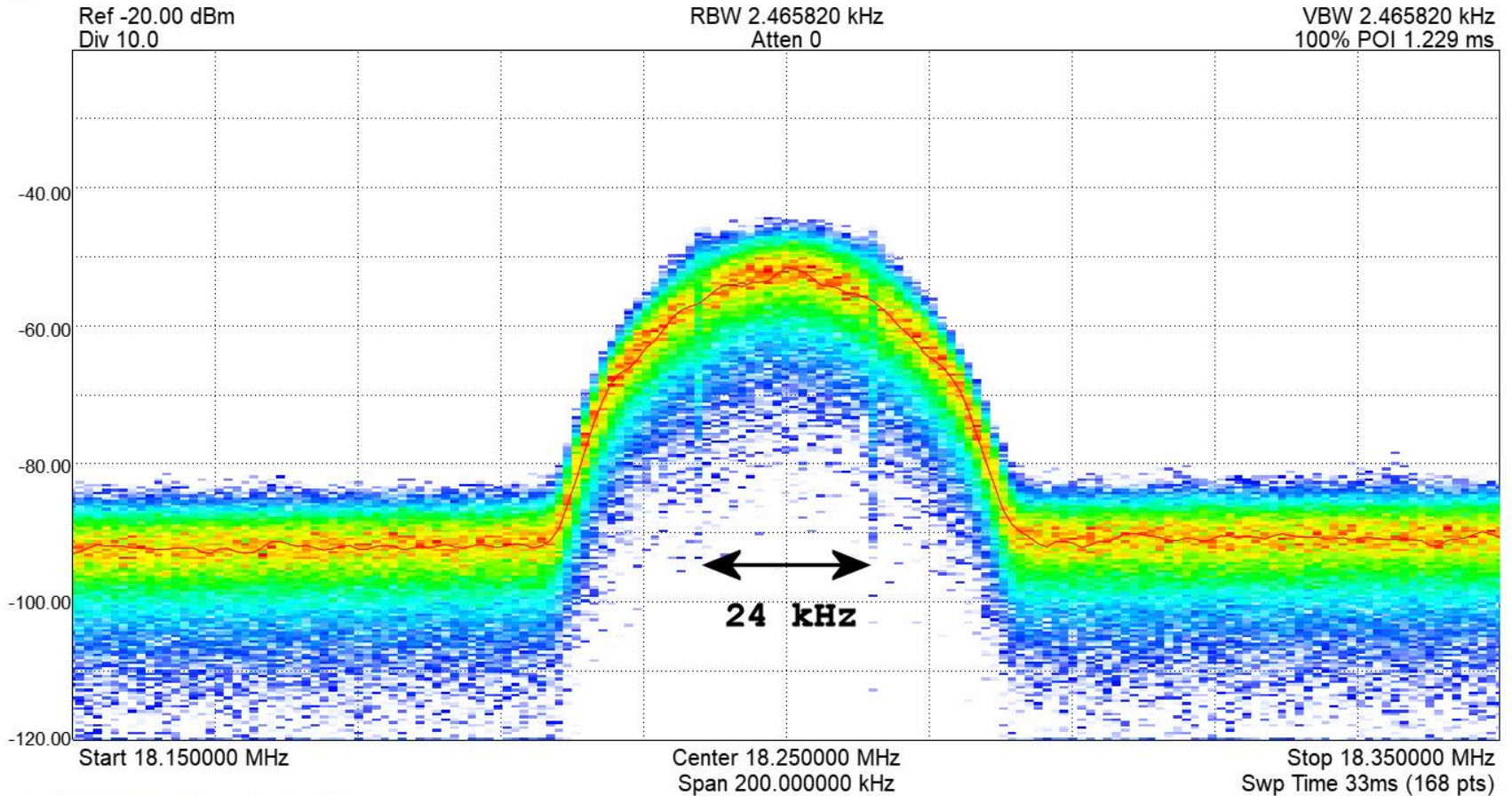


Airspy HF+ Discovery
SDRsharp software

Jump/10Band LLC (WI2XNX) - 45W050 Beith Rd, Elburn (Virgil Twp.), IL



Version 3.8.8



Signal Hound BB60C, Serial: 22232150, Firmware: 8

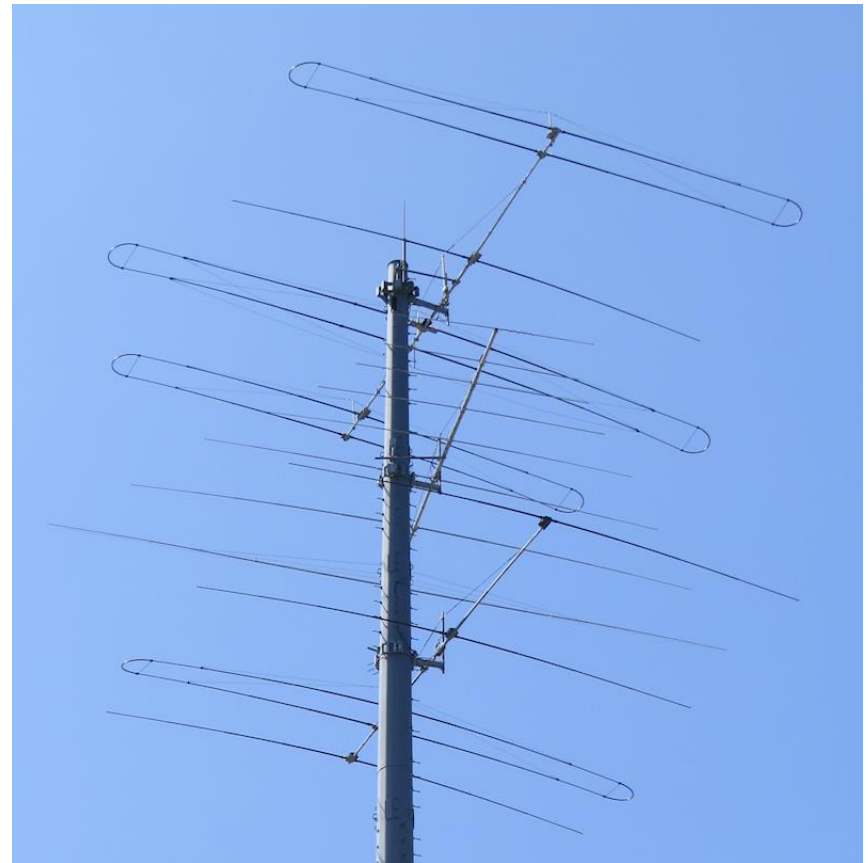
8/2/2023 10:54:28 AM

Signal Hound BB60C
Spike software

Delmarva Broadband Services LLC (WJ2XXS)
9750 Route 126, Yorkville, IL (41° 37' 54" N, 88° 26' 33" W)

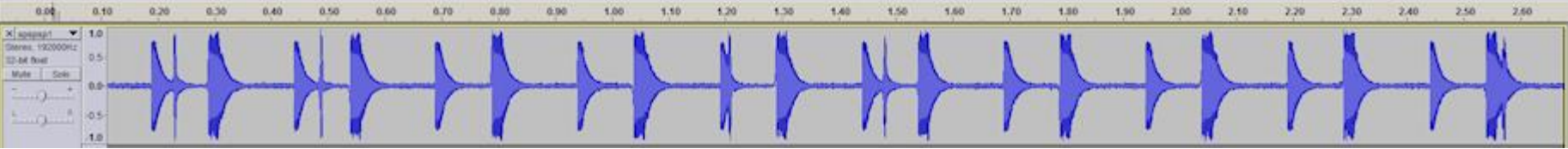
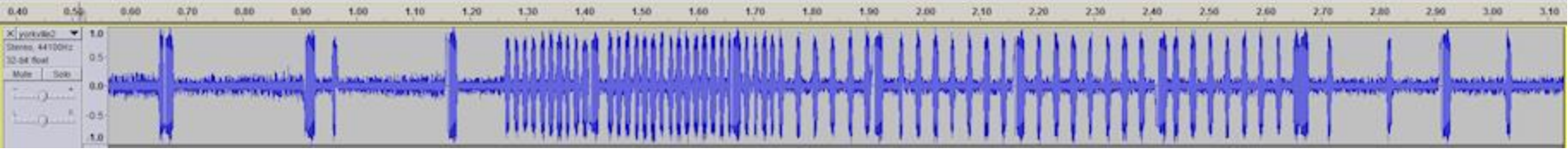
Frequencies: 6.795-7.000, 7.450-8.000, 9.040-9.400, 10.150-11.175, 11.400-11.600,
12.100-12.230, 14.350-14.990, 15.800-16.360, 16.200-16.360, 18.200-18.700 MHz

Emission: 10K0D1D, 24K0D1D Modulation: (Confidential)



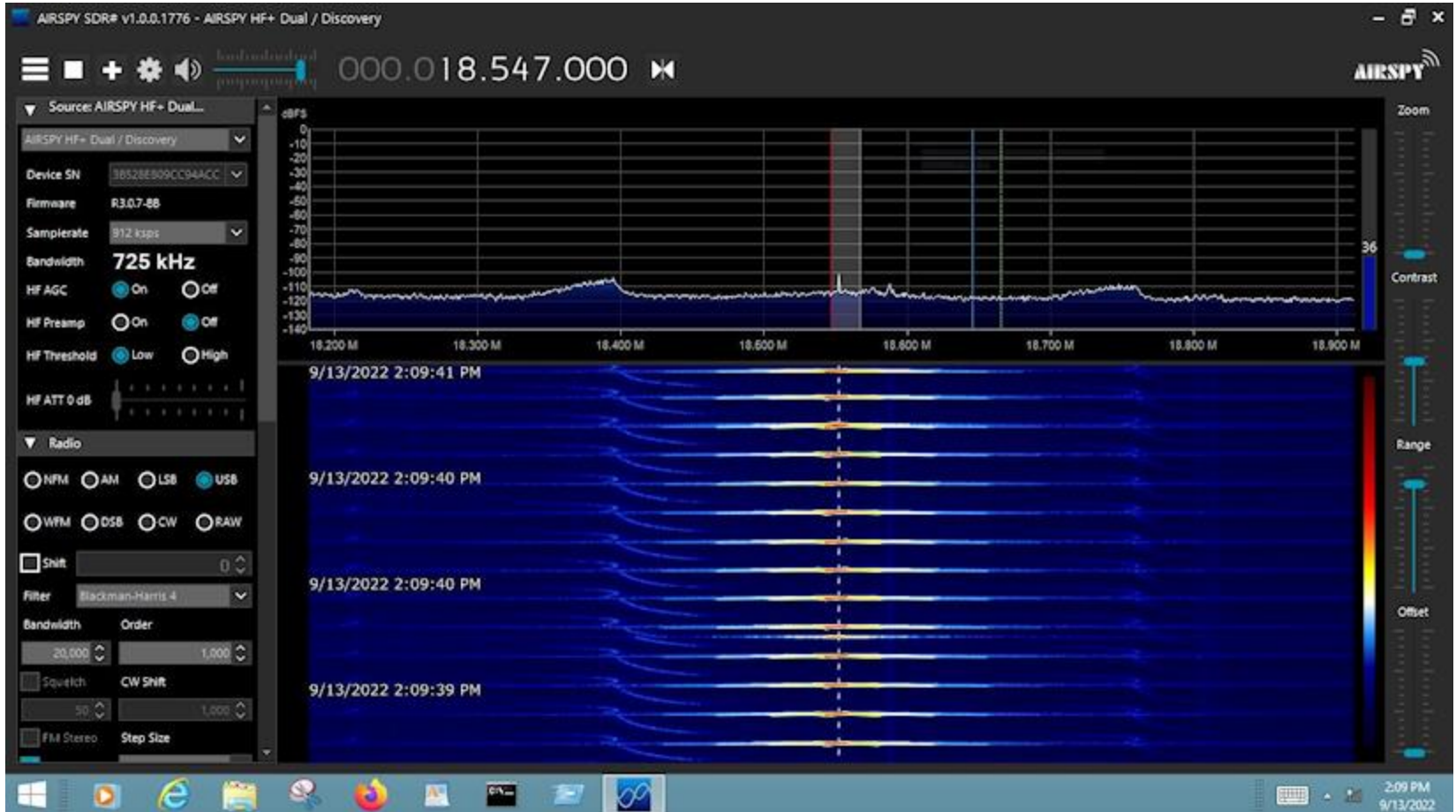
Tower space is leased from Verticalbridge.

Delmarva Broadband Services LLC (WJ2XXS) - 9750 Route 126, Yorkville, IL



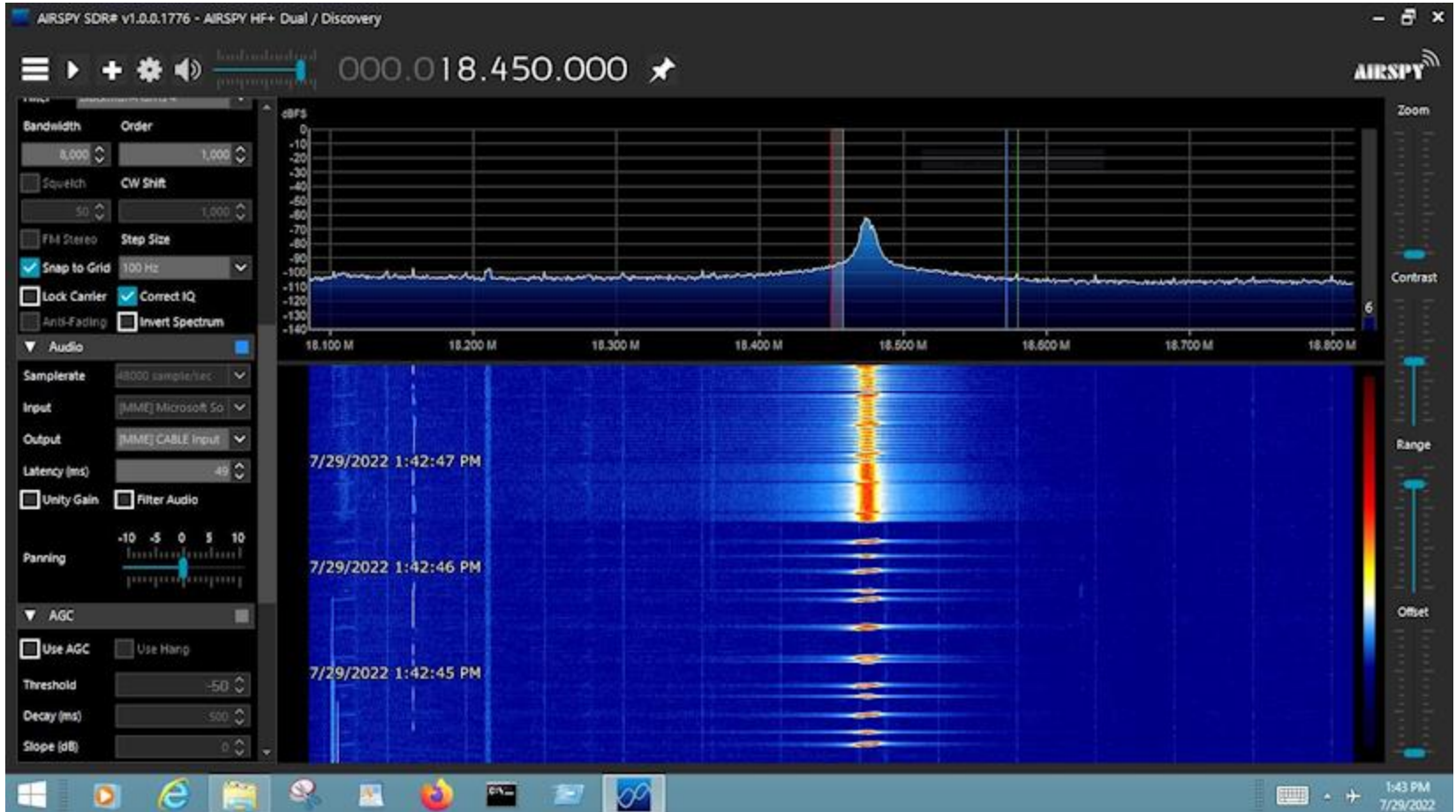
[Audio example A](#)
[Audio example B](#)

Delmarva Broadband Services LLC (WJ2XXS) - 9750 Route 126, Yorkville, IL



Airspy HF+ Discovery
SDRsharp software

Delmarva Broadband Services LLC (WJ2XXS) - 9750 Route 126, Yorkville, IL



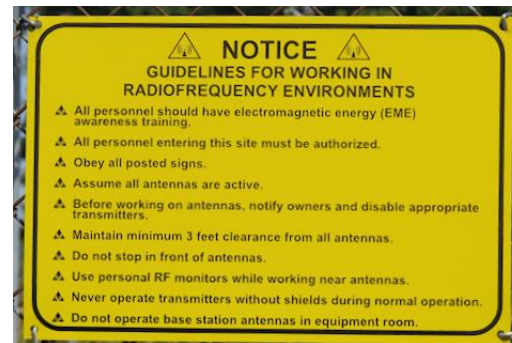
Airspy HF+ Discovery
SDRsharp software

Jump/10Band LLC (W12XNX)

45W030 Bateman Road, Elburn (Kaneville Twp.), IL (41° 51' 8" N, 88° 29' 23" W)

Frequencies: 6.7650-7.000, 7.450-8.100, 10.150-11.175, 12.100-12.230, 14.350-14.990, 16.200-16.360, 18.168-18.750, 19.020-19.680, 20.010-21.000 MHz

Emission: 24K0D1D, 24K0F1D, 48K0D1D, 48K0F1D Modulation: FSK, 4-QAM



Tower space is leased from American Tower

FalconION, Inc. (WM2XHW)

16152 West 143rd Street, Lockport (Homer Glen), IL (41° 37' 42" N, 88° 00' 44" W)

Frequencies: 7.140-8.400, 9.040-9.400, 10.150-11.175, 14.000-14.990, 15.800-16.360 MHz

Emission: 5K00G1D, 10K00G1D, 20K00G1D Modulation: (Confidential)



FalconION, Inc. (WM2XHW)

10470 164th Pl, Orland Park, IL (41° 35' 29" N, 87° 52' 27" W)

Frequencies: 7.140-8.400, 9.040-9.400, 10.150-11.175, 14.000-14.990, 15.800-16.360 MHz

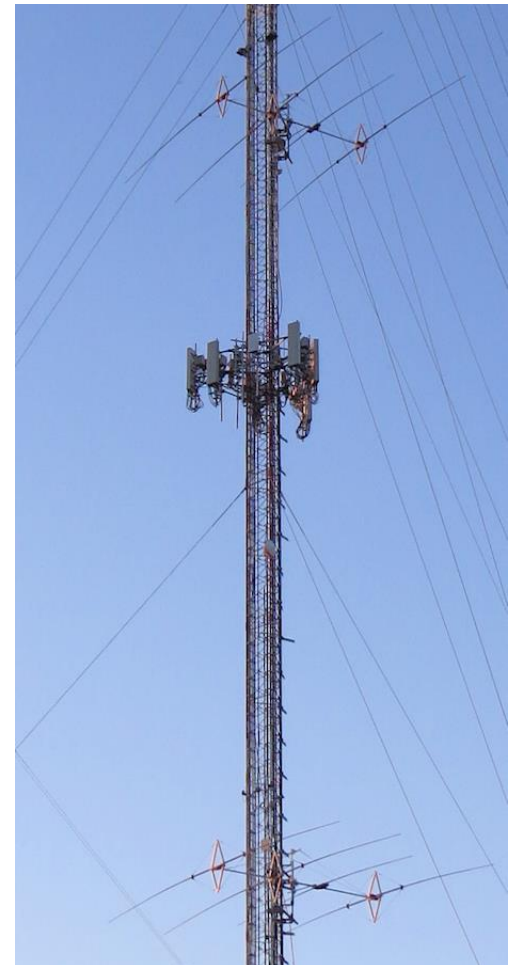
Emission: 5K00G1D, 10K00G1D, 20K00G1D Modulation: (Confidential)



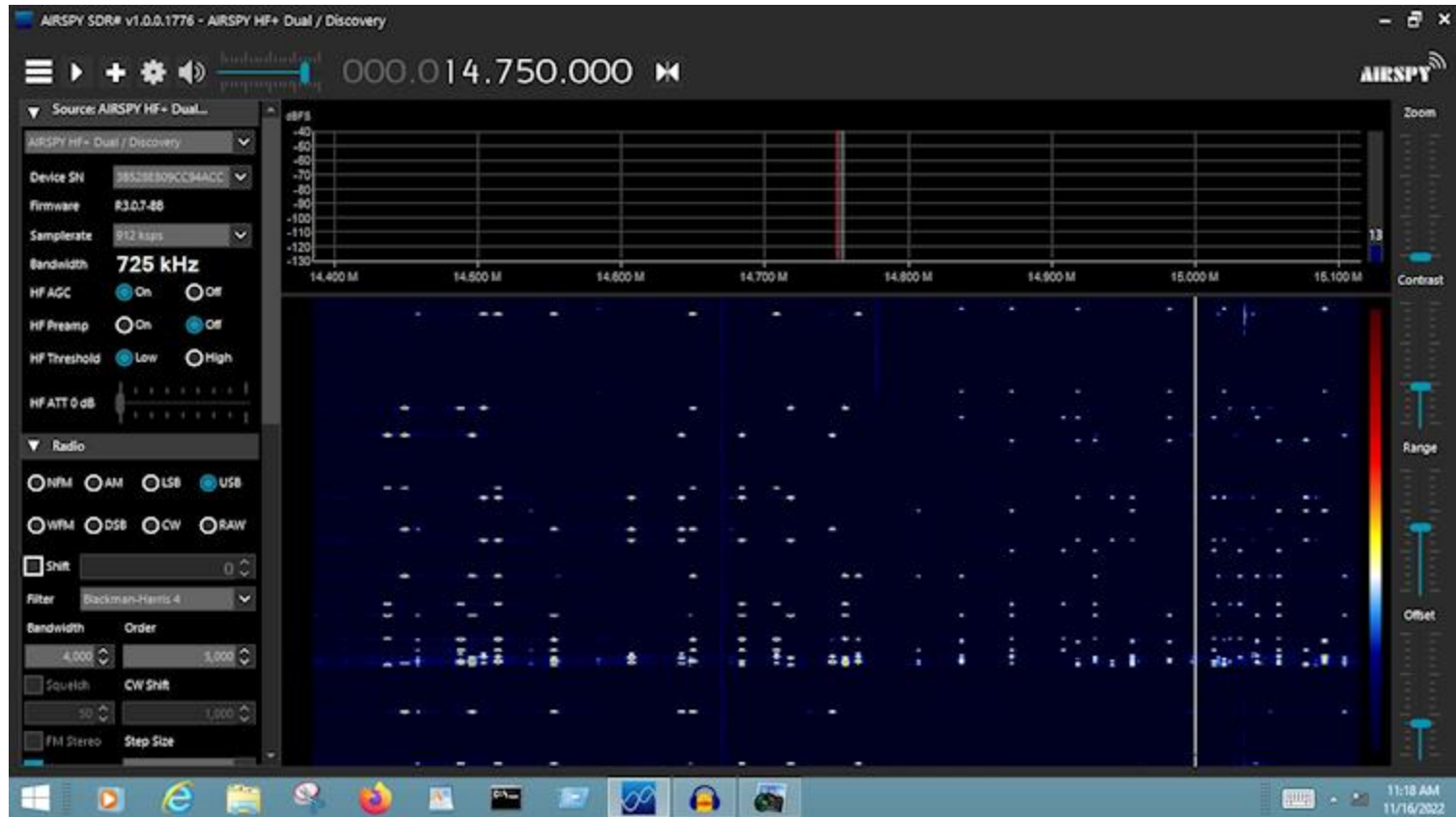
Farside Communications LLC (WL2XFU)
1950 Bilter Road, Aurora, IL (41° 48' 26" N, 88° 16' 6" W)

Frequencies: 4.438-4.650,5.060-5.450,5.730-5.800,6.765-7.000,7.550-8.100,9.040-9.300,10.150-11.175,11.400-11.500,12.200-12.230,14.350-14.990,15.900-16.360,18.168-18.780,20.010-21.000,23.350-24.890 MHz

Emission: 3K00D1D, 6K00D1D, 8K00D1D, 10K0D1D, 12K0D1D, 16K0D1D, 24K0D1D, 36K0D1D, 48K0D1D Modulation: OOK



Farside Communications LLC (WL2XFU) - 1950 Bilter Road



Airspy HF+ Discovery
SDRsharp software

M-Wave Networks LLC (WL2XEE)

Near Church and Bilter Roads, Aurora, IL (41° 48' 30" N, 88° 17' 17" W)

Frequencies: 7.140-8.400, 9.040-9.400, 10.150-11.175, 14.000-14.990, 15.800-16.360 MHz

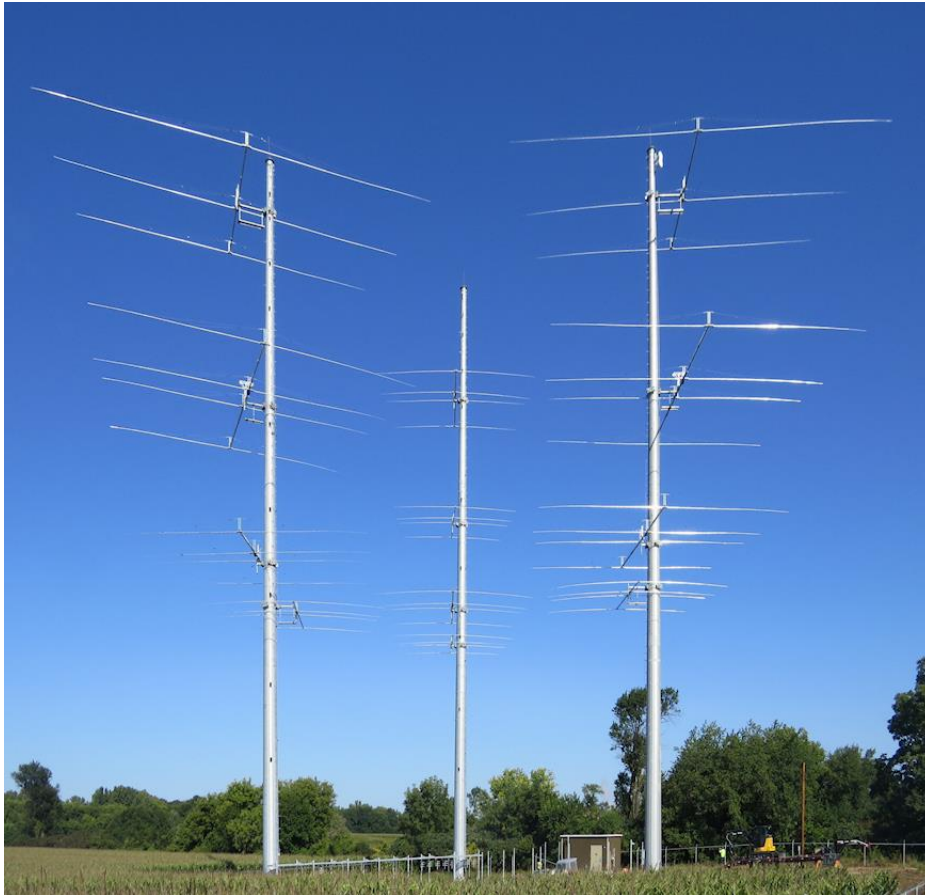
Emission: 16K0D7D Modulation: (Confidential)



Tower Research Capital/Alpha Bravo Communications LLC (WM2XZU)
2S480 S Lorang Road, Elburn (Kaneville Twp.), IL (41° 49' 47" N, 88° 29' 24" W)
(under construction)

Frequencies: 6.100-6.900, 7.700-8.300, 9.040-9.400, 9.700-10.050, 10.150-11.175,
11.400-11.600, 14.000-14.990, 15.800-16.360 MHz

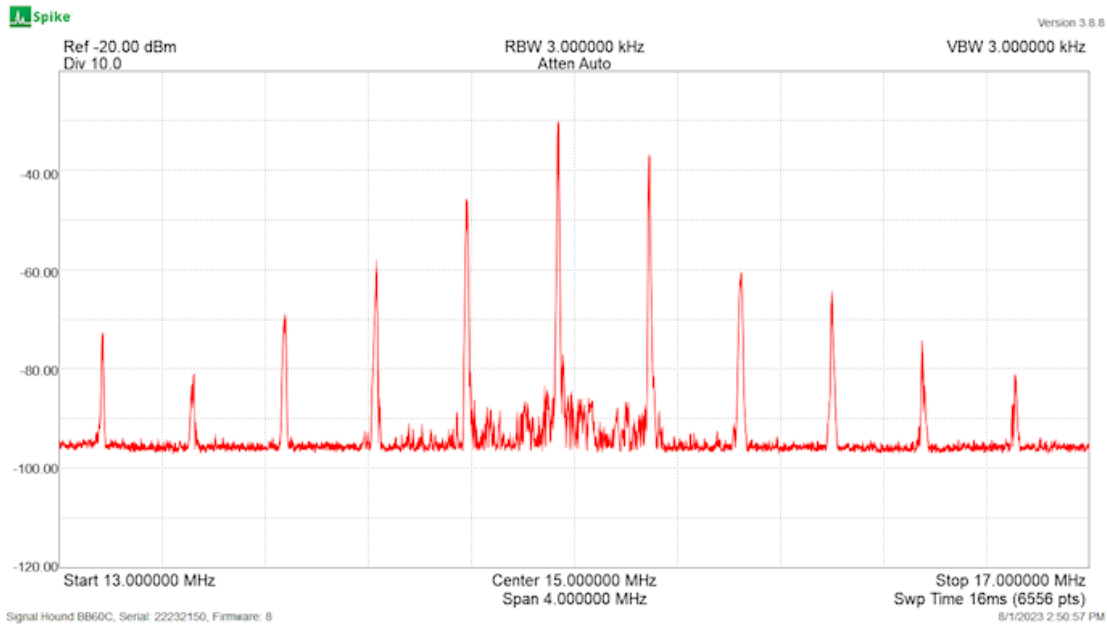
Emission: 10K0D7D Modulation: FSK, OOK, 4QAM, OFDM



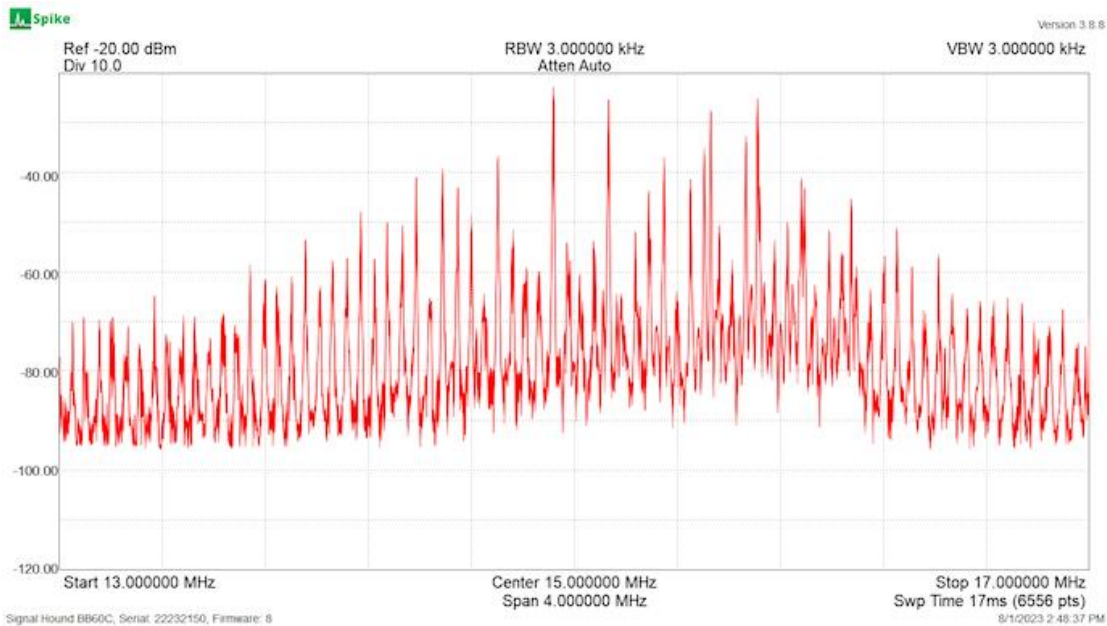
**Tower Research Capital/Alpha Bravo Communications LLC (WM2XZU) - 2S480 S Lorang Rd.
Previous images were NOV 2022. (3+3+3 = 9 beams on 3 towers)
This one is AUG 2023. (5+4+4 = 13 beams on the 3 towers)**



Tower Research Capital/Alpha Bravo Communications LLC (WM2XZU) - 2S480 S Lorang Rd.



Peak Hold
Signal Hound BB60C
Spike software



Peak Hold
Signal Hound BB60C
Spike software

Tower Research Capital/Alpha Bravo Communications LLC (WM2XZU) - 2S480 S Lorang Rd. Maintenance being done by Sabre Communications.

Upper man is operating the ropes.
The lower man is detaching the lower antenna to fix/repair the rotator.



Parable Broadcasting Company, LLC (WM2XZV)
40W015Seavey Rd., Batavia, IL (41° 49' 32" N, 88° 23' 50" W)

Frequencies: 5.745-5.785, 6.780-6.985, 7.465-8.180, 9.055-9.250, 10.165-11.160, 11.415-11.570, 12.115-12.170. 13.425-13.555, 13.885-13.985, 14.365-14.975, 15.815-16.345 (Note: Not all modes licensed for all frequencies.)

Emission/Modulation: 10/20/K0D7W Mixed channel OFDM, 10/20/25/40/50K0F1D Single channel FSK, 10/20/25/40/50K0D1D Single channel OFDM, 10/20/25/40/50K0F7D, Two or more channel FSK, 10/20/25/40/50K0D7D Two or more channel OFDM



County Information Service, LLC (WH2XWU)
8399 W. 1050 S, Wanatah, IN (41° 27' 24" N, 86° 51' 37" W)

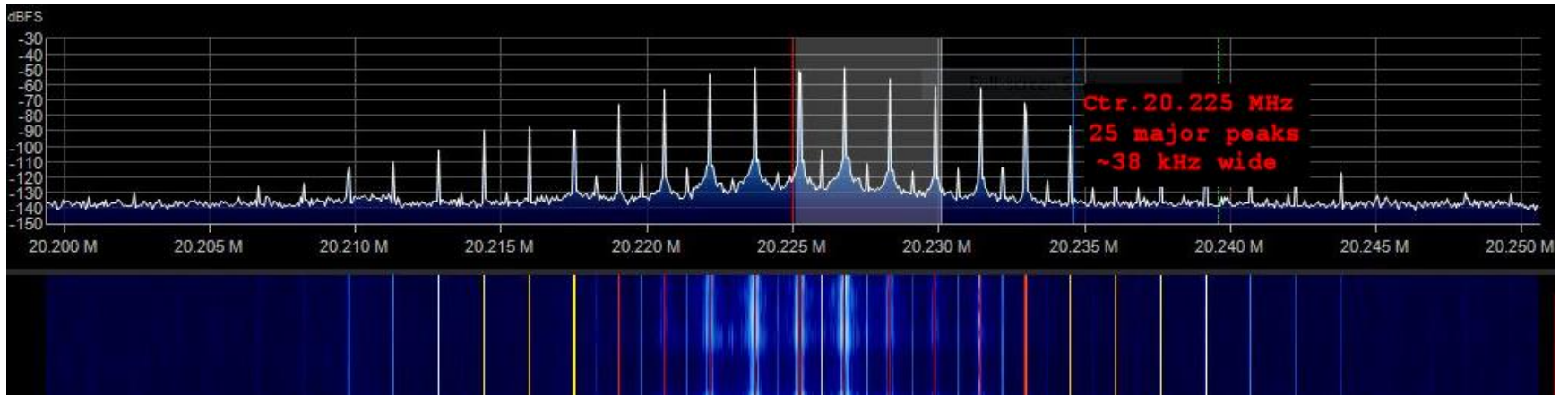
Freq.: 13.883, 14.540, 14.645, 14.672, 14.720, 14.975, 15.808, 16.158, 16.222, 16.252, 16.310, 17.418, 17.469, 18.344, 18.426, 18.535, 18.724, 19.030, 19.048, 19.084, 19.673, 19.922, 20.156, 20.220, 20.250



Emission: 12KPG1D, 24K0G1D, 48K0G1D
Modulation: 12.5, 25, 50 kps digital signal



County Information Service, LLC (WH2XWU) - 8399 W. 1050 S, Wanatah, IN



**Toggle Communications LLC (WI2XAJ-41° 51' 30" N, 88° 29' 10" W) tower
viewed from 10Band LLC (WI21XNX-41° 51' 8" N, 88° 29' 23" W)**

**Some of the sites are
very close to each other.**

